

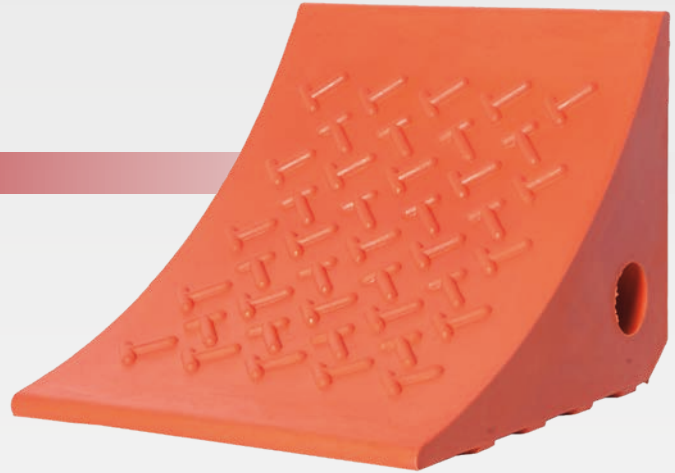
**QVEE**

AUTOMOTIVE | MINING | MARINE

www.qvee.com.au

**Polyurethane Wheel Chock**

#QVWCHD004



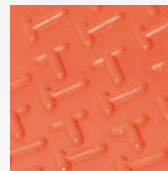
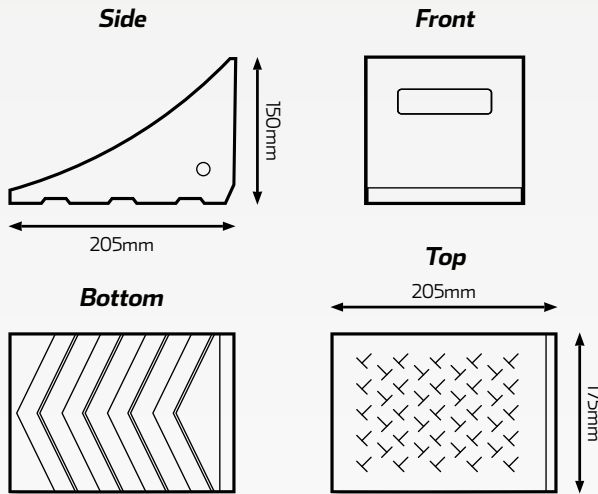
**DESCRIPTION**

Polyurethane wheel chocks to suit 4WD mine spec vehicles.

**FEATURES**

- Rugged polyurethane construction
- T shaped surface area
- Moulded carrying handle
- Mounting hole for rope, chains and brackets
- Fluorescent orange finish for high visibility use in poor daylight conditions

**TECHNICAL SPECIFICATIONS**



T shaped surface area



Molded carrying handle



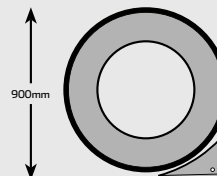
Mounting hole for rope, chains, brackets



**P/N. QVWCBRK004**  
Wheel chock bracket to suit QVWCHD004 (Optional)

<b>Material</b>	• U.V stabilised polyurethane
<b>Colour</b>	• Orange
<b>Dimensions</b>	• 205mm L x 175mm W x 150mm H
<b>Bottom</b>	• Solid Ribbed (T shaped)
<b>Weight</b>	• 0.88kg
<b>Tyre Size</b>	• Up to 900mm Dia
<b>Max. Weight</b>	• 5 Tonnes / 5,000 kg (per pair of chocks)

**SUGGESTED USE**



Up to 34" tyre size. An optimal safety wheel chock should approximately be 1/4 in height of the fitted tyre.

- Car
- Ute
- Trailer
- 4WD

\*Wheel chock should be placed squarely and centered againsts the tyre with the park brake on.