

QVEE

AUTOMOTIVE | MINING | MARINE

www.qvee.com.au

Polyurethane Wheel Chock

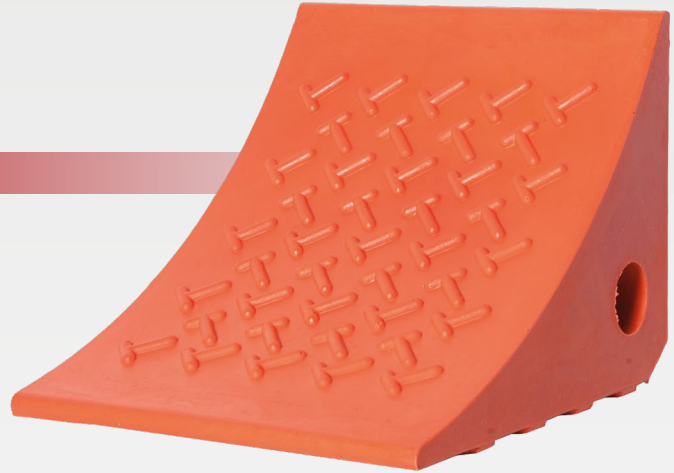
#QVWCHD004

DESCRIPTION

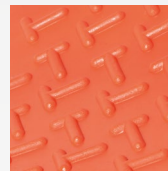
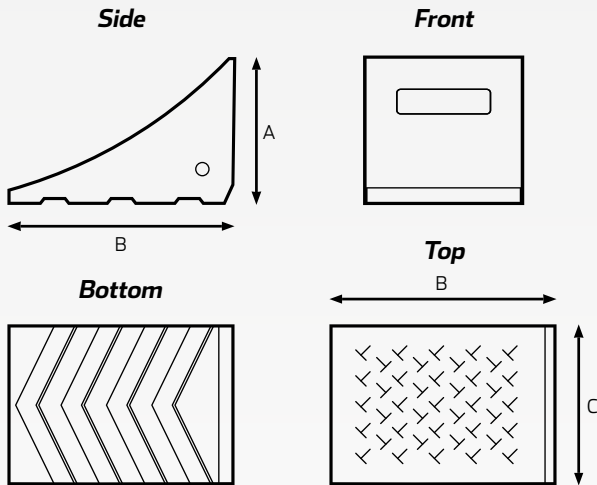
Polyurethane wheel chocks to suit 4WD mine spec vehicles.

FEATURES

- Rugged polyurethane construction
- T shaped surface area
- Moulded carrying handle
- Mounting hole for rope, chains and brackets
- Fluorescent orange finish for high visibility use in poor daylight conditions



TECHNICAL SPECIFICATIONS



T shaped surface area



Molded carrying handle



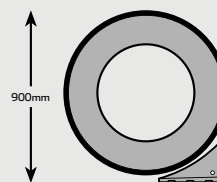
Mounting hole for rope, chains, brackets

DIMENSIONS

A	B	C
• 150mm	• 205mm	• 175mm

Material	• U.V stabilised polyurethane
Colour	• Orange
Dimensions	• 205mm L x 175mm W x 150mm H
Bottom	• Solid Ribbed (T shaped)
Weight	• 0.88kg
Tyre Size	• Up to 900mm Dia
Max. Weight	• 5 Tonnes / 5,000 kg (per pair of chocks)

SUGGESTED USE



Up to 34" tyre size. An optimal safety wheel chock should approximately be 1/4 in height of the fitted tyre.

- Car
- Ute
- Trailer
- 4WD

*Wheel chock should be placed squarely and centered againsts the tyre with the park brake on.